

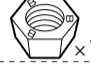
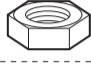






Thank you for purchasing RÄZO shift knob, the best and most innovative product available. Please read thoroughly before commencing and safekeep for future reference.

Included Parts

Inner Nut	Mark	Top Nut	Size	Color	
 x1	A	 x1	M10×P1.25	Black	Inner nuts contain special marking for easy identification.
 x1	B	 x1	M10×P1.5	Light Yellow	
 x1	C	 x1	M12×P1.25	Silver	
Decal x1		Double-Sided Tape x1	 (May not be required)		

Before Installing

CAUTION Be sure to turn off the engine and engage the parking brake before commencing. Working while the vehicle is parked on a slope is not recommended.

CAUTION Take care not to cause damage when removing your factory shift knob.

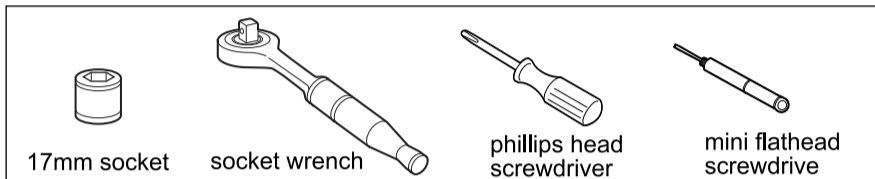
Regarding the Icons

You will see the following icons throughout this manual: **CAUTION** Reference

CAUTION Failure to observe instruction may result in injury or damage to product or vehicle.
Reference Detailed explanation and additional information.

Required Tool

omit



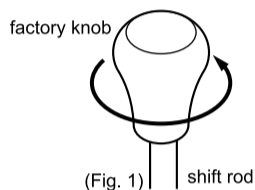
How to Install

1 Removing Factory Knob

Turn counterclockwise to loosen and remove (Fig. 1).

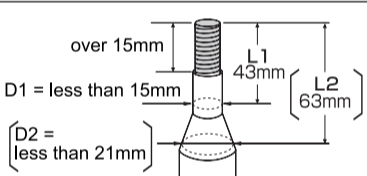
Reference Use a hair dryer to gently warm up the area if adhesive was used by the manufacturer.

Reference Also remove any parts that are used to hold the factory knob.



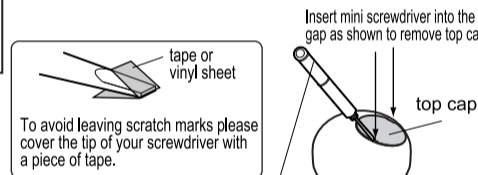
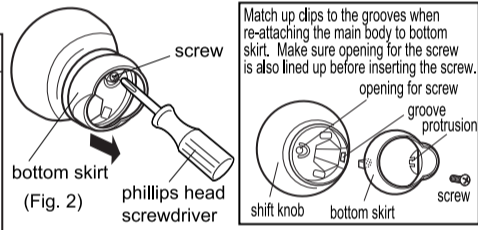
2 Please refer to the illustration below to determine whether the bottom skirt portion is needed. Remove and keep for future reference if it's not applicable to your vehicle (Fig. 2). Also, the top cap should be removed first and to be re-attached later.

Must conform to the following dimension



Install without the bottom skirt if L2 and D2 are not met.

* Refer to the straight portion for measurement if your factory shift rod is curved.



To avoid leaving scratch marks please cover the tip of your screwdriver with a piece of tape.

3 Selecting Inner Nut and Top Nut

Refer to the chart below to determine the correct size. Fasten Inner Nut onto the shift rod by hand (Fig. 4).

CAUTION Clean the grooves in the thread if nut cannot be screwed on easily. Please try a different size if difficulty persists.

The following are MT vehicles

As of 1/07

brand		shift rod diameter	Inner Nut	pitch	marking	color
TOYOTA	all	12mm	M12	1.25	C	Silver
NISSAN	some vehicles with 6spd	12mm	M12	1.25	C	Silver
	other*	10mm	M10	1.25	A	Black
SUBARU	all	12mm	M12	1.25	C	Silver
DAIHATSU	all	12mm	M12	1.25	C	Silver
MAZDA	FC3S before m/c, SA22C, Cosmo, Luce	12mm	M12	1.25	C	Silver
	all other	10mm	M10	1.25	A	Black
MITSUBISHI	all	10mm	M10	1.25	A	Black
SUZUKI	all	12mm	M12	1.25	C	Silver
ISUZU	all	10mm	M10	1.25	A	Black
HONDA	all	10mm	M10	1.5	B	LightYellow

* Not applicable with 8mm shift rod. May not fit some pre '85 vehicles.

CAUTION Specs may vary. Please confirm with actual vehicle.



4 With the Inner Nut already fastened on the shift rod, line up all 6 sides on the nut with the opening on bottom of the shift knob then lower the shift knob over the nut (Fig. 5).

5 Turn clockwise to screw in the shift knob until the shift rod protrudes slightly above the upper portion of the shift knob as shown in Fig. 6-1 and 6-2 (protrusion depends on each vehicle's shift rod). You will not be able to re-attach the top cap properly if shift rod is raised above the top edge.

6 Screw on the proper sized Top Nut until it reaches the bottom. Determine the desired angle for the shift knob, then place the 17mm socket wrench over the Top Nut and tighten while holding the shift knob with the other hand to prevent movement (Fig. 7).

CAUTION Wearing non-slip working gloves may help when tightening.

Place top cap over the opening and press down until you hear a clicking sound to re-attach (Fig. 8).

Reference In case the top cap cannot be properly closed it is most likely due to excessive protrusion of the shift rod. Remove Top Nut and repeat Step 5.

CAUTION Re-tighten nut 100 miles after installation if necessary. Inspect the shift knob again after 3000 miles to check for any looseness.

CAUTION Do not wait until 100 miles to re-tighten if any looseness is detected.

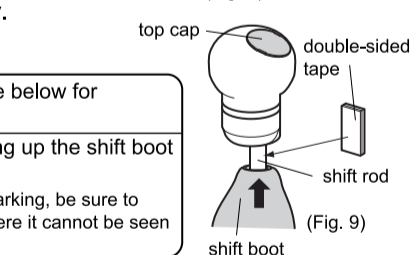
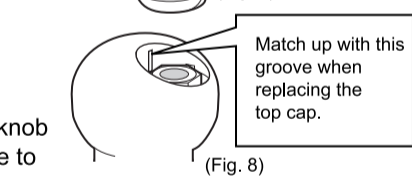
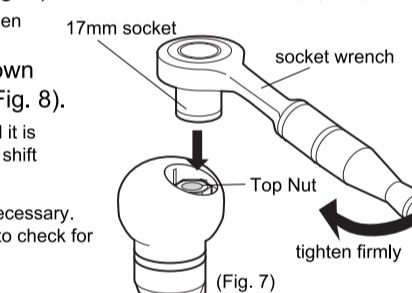
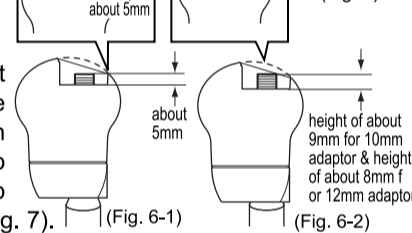
7 After Installing

While the vehicle is stationary, grip the shift knob firmly and run through all the gears with force to ensure there is no looseness or any freeplay. Re-tighten if necessary.

If a portion of your shift rod is exposed please see below for our suggestion.

Apply double-sided tape to shift rod, carefully bring up the shift boot to affix (Fig. 9).

Reference Since the adhesive may leave permanent marking, be sure to place the double-sided tape at a location where it cannot be seen from the outside.



Important Notice

CAUTION Depending on the vehicle, shift feel may change dramatically after installation. Please drive with caution until you've become used to the new shift knob.

CAUTION It is extremely dangerous to operate your vehicle while the shift knob is loose.

CAUTION Shift knob can become extremely hot when the vehicle is parked under direct sunlight. Please exercise caution.

CAUTION Rings and other accessories can cause damage to the shift knob. RÄZO does not recommend driving with jewelry on your hand.

Reference Please keep all leftover parts for future reference. The shift knob can be re-installed on a different vehicle. omit second part is not necessary